

Dear parent and carers,

As promised, I am writing with additional information about the return of students to our school campus. First, a reminder about the dates for our phased return.

Commencing 25 October (Week 4)	<ul style="list-style-type: none"> • Early childhood centres (ECEC) • Preschool and Kindergarten • Years 1 and 2 • Year 6 • Years 9 and 10 • Out of school hours care (OSHC)
Commencing 1 November (Week 5)	<ul style="list-style-type: none"> • Years 3, 4 and 5 • Years 7 and 8
<i>From weeks 1 to 4 of term, onsite supervision and care continues to be available for vulnerable children and young people whose parents are essential workers.</i>	

Drawing on national and local health advice we have developed a return to school plan which has three key priorities:

- the health and safety of staff and young people,
- the mental and emotional well-being of students and staff, and
- ensuring continuity of learning.

Below is an outline of [ACT Health Guidelines](#) that schools are required to implement to ensure effective COVID-19 measures are in place.

Use of Check in CBR app	All staff and visitors must check in using the 'Check in CBR' app. Parents and carers cannot enter school grounds except for an essential reason. Visitors must call to make an appointment, or in advance of attendance. All visitors must report to the front office.
Student illness	Staff and students who are unwell are not able to attend school. Students who present unwell will be required to go home.
Hygiene	Schools will maintain and promote appropriate hand hygiene and respiratory hygiene practices. Students will need to wash hands and use hand sanitisers throughout the day. Students will not be allowed to share food or drink.

Masks	<p>Staff, visitors and students* in years 7-12 must wear a face mask on campus. Students in years 3-6 are encouraged to wear a mask if they are comfortable doing so. Students in Preschool to year 2 are not required to wear a mask. Masks may not be suitable for students with a disability or medical condition and schools will make allowances for those students not to wear masks.</p> <p><i>* Students will be required to wear their personal masks. Masks will be available at school for those who require them. Disposable masks need to be changed every four hours.</i></p>
Physical Distancing	<p>Physical distancing between children and young people is not always possible, particularly in single classrooms and school environments. It is however important for limiting the transmission of COVID 19. To promote physical distancing we may adjust learning programs, breaktimes, our timetable as well as pick up and drop off arrangements. More specific information about what this means for your child is included below.</p>
Environmental cleaning	<p>Our school cleaning program includes regular cleaning of high touch surfaces, frequently used objects, and play equipment.</p>
Ventilation	<p>All schools have been assessed to increase fresh air circulation and this may involve changes to ventilation, modified HVAC system settings and maximising the use of outdoor learning spaces.</p>
Managing suspected cases	<p>We are prepared to respond to a positive COVID-19 case on campus, should the need arise. ACT Health will provide direction to the school and community, which may result in a full or partial school closure. A student who presents with symptoms of COVID-19 will be isolated with suitable supervision, and parents will be required to collect their child. Symptomatic students will be required to wear a mask.</p>
Will schools have routine testing for COVID-19?	<p>Anyone with COVID-19 symptoms should get tested immediately. ACT Health is not recommending routine COVID-19 testing of children, young people or staff using rapid antigen testing.</p>
Wellbeing supports	<p>Wellbeing and learning supports, such as face to face appointments with the school psychologist or access to a Learning Support Assistant, will recommence with the return to school.</p> <p>For parents and carers of students with a medical vulnerability: if you wish the school to make reasonable adjustments for the safe return of your child, you must consult a GP and provide medical advice to that effect. Where adjustments can't be made, the school will support your child to learn from home.</p>

To further support the ACT Health Guidelines our school is making the following adjustments.

<p>Drop off/pickup and cohort meeting points</p>	<p>As a school community we understand the complexities of our school carpark and the pickup and drop-off of our students. However, in the current climate we are required to put strategies in place to minimise the mixing of year groups and the number of adults onsite to protect our students and staff.</p> <p>During Term 4, parents, volunteers and visitors will not be permitted on school grounds. Communication with teachers and the front office staff is encouraged and welcomed via telephone 6142 3580 and email. Scheduled appointments can be arranged on request for urgent matters unable to be resolved through contactless communication.</p> <p>For school drop off and pick up please read the relevant sections below carefully.</p>				
	Morning drop off routines				
	Year group	Time	Parking/drop off	Entry point to school	Student meeting point
	Preschool	8.45am – 9.00am CASAC offer before school care for families requiring an earlier drop off.	Parking: The dirt carpark only	Main gates at the back of the preschool building. (Please maintain social distancing and wear a mask).	Teachers will bring children into the playground
	Kindergarten		Kiss and drop off only at the front of the school	Front office	Enter through the front office where they will be welcomed and directed to the Amphitheatre to meet their teacher.
	Year 1		Kiss and drop off only at the front of the school	Front office	Enter through the front office where they will be welcomed and directed to the Handfuls of Happiness courtyard to meet their teacher.
	Year 2		Kiss and drop off only at the front of the school	Front office	Enter through the front office and meet their teacher on the synthetic grass
	Year 3			Oval (White Crescent/ shop side)	Enter oval from the dirt driveway on White Crescent or from the shops and meet classroom teachers on the demountable deck
	Year 4			Oval (White Crescent/ shop side)	Enter oval from the dirt driveway on White Crescent or the shops and meet classroom teachers in the space between the kindergarten demountable and the junior corridor
	Year 5			Vasey Crescent	Enter on Vasey Street. Teachers will meet students at the grassed area near the Basketball courts and supervise their transition to class.
Year 6			Vasey Crescent	Enter on Vasey Street. Teachers will meet the children at the Basketball court on Vasey Crescent and supervise their transition to class.	
<ul style="list-style-type: none"> The bike racks remain available for students to access. Students are encouraged to lock their bike at either location and move immediately to their designated areas walking around the school, not through the school building. In the afternoon children can collect their bikes once dismissed by the teacher. 					
Afternoon pick up routine					
Year group		Parking/Pick up	Exit point from school	Comments	
Preschool	From 2.45pm	Please park in the dirt carpark only	Main gates at the back of the preschool building	Parents are not permitted to enter the preschool playground or classrooms at this time.	

Kindergarten	From 2.45pm	Kiss and drop off only at the front of the school	Front office	Teachers will escort and wait with students at the kiss and drop area in the main carpark. Cars are to drive up for students to be collected. Parents can walk and collect children from this area, but please maintain social distancing from students and teachers.
Year 1	3.00pm	Kiss and drop off only at the front of the school	Front office	Teachers will escort and wait with students at the Loading Bay in the main car park located in front of the hall. Cars are to drive up for students to be collected. Parents can walk and collect children from this area, but please maintain social distancing from students and teachers
Year 2	3.00pm	For families with multiple children please discuss a meeting point for older siblings on the oval for ease of collection. Please note: younger students in preschool and kindergarten can be collected from 2.45pm to support pick up. This meeting point will need to be away from class cohorts to minimise contact across the school.	Students will be dismissed from the Basketball court	Older students are discouraged from re-entering the school building once dismissed by the classroom teacher except in an emergency or where support is needed e.g. cannot find parent, require first aid, feeling anxious.
Year 3	3.00pm		Oval (White Crescent/ shop side)	
Year 4	3.00pm		Oval (White Crescent/ shop side)	
Year 5	3.00pm		Centre of oval	
Year 6	3.00pm		Centre of oval	

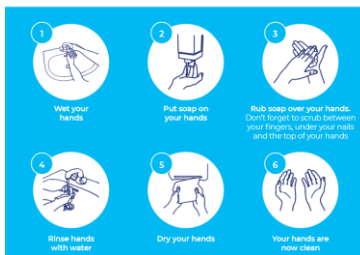
- Parents of children with additional needs who require further adjustments are encouraged to contact the school to discuss individual circumstances.

Hygiene routines

Campbell Primary School has put many processes and procedures in place to support effective hygiene practices.

- Hand sanitiser and tissues will be available in every classroom, staff office and front office
- Wipes will be provided to every classroom to support cleaning of resources
- Toilets and sinks will be stocked with soap and handtowels regularly throughout the day
- Cleaners will be cleaning 'high touch' areas regularly
- Children will be encouraged to wash their hands regularly throughout the day (e.g before /after breaks)
- Staff will be wearing masks
- Children in Years 3 – 6 may choose to wear a mask at school
- Clear signage of hand washing processes, mask wearing and preventing the spread of germs are prominently displayed throughout the school

Protect yourself, your family and the community by washing your hands regularly. Washing your hands properly takes about 30 to 50 seconds.
Washing your hands with soap and water or alcohol-based sanitiser kills viruses that may be on your hands. Always use soap and water if your hands are visibly soiled.



- Children who present with COVID-19 symptoms will be sent to sick bay and parents contacted immediately
- Play equipment and shared resources will be cleaned after use by students
- Students will remain in year group cohorts with designated staff working with cohorts

Always make sure you do the following:

Wash your hands regularly with soap and water or alcohol-based hand sanitiser for 20 to 30 seconds

Cover your cough and sneeze with a tissue or your inner elbow and wash your hands afterwards

Discard used tissues immediately into a bin

Avoid close contact with people who are sick

Avoid touching your eyes, nose, and mouth

Stay at home and avoid social activities or mass gatherings if you're feeling unwell

Teaching and learning

In accordance with ACT Health guidelines Campbell Primary School have put processes and procedures in place to minimise the mixing of year groups, staff and community. Consideration regarding movement around our classrooms, shared teaching spaces, corridors, playgrounds, and extra-curricular activities have impacted how we will be delivering teaching and learning in Term 4.

Our priority will be to focus on student safety, well-being and learning. Our goal is to settle students quickly into new classroom routines in a COVID-19 safe environment, while making sure we continue to develop a sense of belonging and love of learning.

To minimise the impact of COVID-19 in schools, significant and difficult decisions have been made. Our regular specialist teaching programs have been suspended and specialist teachers have been assigned to designated year groups.

As of Week 4, the following staff have been allocated to support our students in designated areas.

Specialist teacher	Release teaching
Nicole Carney	K-2
Lauren Corcoran	Year 1
Rebecca Whalan	Year 2 and Year 3
Erin Minehan	Year 1 and 2
Kate Herrington	Year 6
Kate Stear	Year 4
Libby Gerner	Year 5 and 6
Kate Deady	Year 3 and 4
Paula Kinsman	Preschool covers

Executive support		Year Group
Paula Kinsman	Erin Minehan	Preschool – Year 2
Kate Stear	Kate Herrington	Year 3 – Year 6
Paula Kinsman: all matters requiring Principal involvement and support		

Learning support

assistants have also been allocated to specific year groups and will continue to support eligible students on an individual basis.

Multi-age activities including assemblies, Defence Club, Choir and Enrichment will be suspended. Intervention and Band will continue to be delivered as these are grade level specific groupings. Band will now be conducted outdoors.

Term 4 overviews will be distributed on Friday 22nd October and will outline in detail the year level specific learning outcomes and experiences for your child's class.

As a school community we understand that the changes in routines and rituals may be upsetting, but they are necessary. The school will continue to think of creative ways to maintain a sense of joy, fun and enrichment for our students within their cohorts.

Thank you for your continued support, we greatly appreciate the strength and resilience of our community as we all adjust to our new normal.

Break times

Campbell Primary School will continue to do staggered breaks for our cohorts.

	Recess	Lunch
Preschool	Two designated eating breaks: determined on the needs of students	
Kindergarten-Year 2	11.00am-11.30am	1.30pm-2.00pm
Year 3- Year 6	10.30am – 11.00am	1.00pm-1.30pm

During breaks, each year level will be rostered to a designated play area. All children must play in their designated area on the rostered day. It is essential that students come to school with a hat and sunscreen applied. Additional sunscreen will be available in all classrooms for students to access and apply.

Name of area on roster	Includes the following spaces	Shaded area	Comments
Equipment	Equipment, AstroTurf	Under the BER awning	
Oval 1	Oval	Sports Canopy near Year 6 portables	Portable pop-up sun shelters are being purchased to support quiet shaded play in these areas.
Oval 3	Oval and Sensory Garden	Under the awning in the sensory garden	
Basketball court	Basketball court and grassed area near the building site	Shaded areas under the trees.	If insufficient a sport canopy will be placed in area

Roster

Day/Year group	K	1	2	3	4	5	6
Monday	Equipment	Oval 1	Basketball court	Oval 1	Equipment	Equipment	Basketball court
Tuesday	Basketball court	Equipment	Oval 1	Equipment	Basketball court	Oval 1	Oval 3
Wednesday	Oval 1	Basketball court	Equipment	Oval 3	Equipment	Basketball court	Oval 1
Thursday	Equipment	Oval 1	Basketball court	Basketball court	Oval 1	Oval 3	Equipment
Friday	Basketball court	Equipment	Oval 1	Oval 1	Oval 3	Equipment	Basketball court

- In extreme weather events students will remain in their classroom with ventilation protocols in place.

Designated bathrooms

Preschool	Kindergarten, Years 1, 3, 5, 6	Years 2 and 4
Preschool bathrooms	Portable Bathrooms	Junior wing corridor

- In the event of an emergency a student can access the nearest facility

Before and After School Care	<p>CASAC will provide detailed communication regarding how the service will be operating under the ACT Health guidelines to enrolled families. Please contact CASAC directly to secure a booking. Telephone: 0479099070 Enrolment can be completed using the following links: 2021 CASAC Enrolment - EXISTING FAMILIES 2021 CASAC Enrolment - NEW FAMILIES</p> <table border="1" data-bbox="375 398 1420 721"> <thead> <tr> <th></th> <th>P-2</th> <th>3-6</th> </tr> </thead> <tbody> <tr> <td>Drop off / Pick up</td> <td>Through the regular CASAC entry point. (BER orange doors) Younger children will still be supported to and from school.</td> <td>Through the sensory garden gates near the basketball court.</td> </tr> <tr> <td>Supervision spaces</td> <td>BER Hall equipment</td> <td>Green and orange classroom Sensory Garden/designated outdoor spaces</td> </tr> <tr> <td>groupings</td> <td colspan="2">Children will then be grouped by their year groups in these spaces for activities.</td> </tr> <tr> <td>Staffing</td> <td colspan="2">Staff will be rostered to support either K-2 or Years 3-6 to avoid cross over wherever possible</td> </tr> <tr> <td>Cleaning</td> <td colspan="2">Extensive cleaning protocols have been put in place between and during sessions.</td> </tr> </tbody> </table>		P-2	3-6	Drop off / Pick up	Through the regular CASAC entry point. (BER orange doors) Younger children will still be supported to and from school.	Through the sensory garden gates near the basketball court.	Supervision spaces	BER Hall equipment	Green and orange classroom Sensory Garden/designated outdoor spaces	groupings	Children will then be grouped by their year groups in these spaces for activities.		Staffing	Staff will be rostered to support either K-2 or Years 3-6 to avoid cross over wherever possible		Cleaning	Extensive cleaning protocols have been put in place between and during sessions.	
	P-2	3-6																	
Drop off / Pick up	Through the regular CASAC entry point. (BER orange doors) Younger children will still be supported to and from school.	Through the sensory garden gates near the basketball court.																	
Supervision spaces	BER Hall equipment	Green and orange classroom Sensory Garden/designated outdoor spaces																	
groupings	Children will then be grouped by their year groups in these spaces for activities.																		
Staffing	Staff will be rostered to support either K-2 or Years 3-6 to avoid cross over wherever possible																		
Cleaning	Extensive cleaning protocols have been put in place between and during sessions.																		
School Canteen	<p>The school canteen will continue to offer a modified service.</p> <ul style="list-style-type: none"> • Only a lunch service will be provided • A modified menu will be implemented • Only online ordering will be accepted, there will be NO over the counter sales. <p>The canteen will be operated by employed staff only, lunch baskets will be delivered by school staff to designated classrooms at the appropriate lunch breaks.</p>																		

We will continue to review and adjust these measures based on the most up to date advice from ACT Health.

Remember, all adults and children aged 12 years and above are eligible for vaccination. If your child is eligible but not yet vaccinated, we encourage you to book them in by calling the COVID-19 vaccination line on 5124 7700 daily between 7am-7pm. Bookings can also be made with some [GP clinics and pharmacies](#).

We understand that there has been considerable change and uncertainty for our students during the pandemic, and as we transition back to school. I'd remind you that you and your child can book an appointment with our Telehealth Support Service on 02 6205 1559 between 9.00am and 4.30pm weekdays. With the return to school, your child will also be able to organise face to face sessions with the school psychologist.

For more information about the return to schools, I'd recommend visiting [the Education Directorate's website](#).

You can keep up to date with the latest health information, advice and resources on the [ACT's COVID-19 website](#).

I would also like to take this opportunity to thank you for your support and understanding as we return to face-to-face schooling.

We look forward to seeing all our students back at school.

My regards,

Paula Kinsman | Principal
Phone: +61 2 6142 3580 | Fax: +61 2 6142 3590 | Email: paula.kinsman@ed.act.edu.au
Campbell Primary School | Education and Training | ACT Government
Chauvel Street Campbell 2612 | www.campbellps.act.edu.au